

# Be a Part of the IBEW's History

The renovation and restoration of the Henry Miller house is expected to cost approximately \$6 million for construction and ongoing operations and is being funded through donations to the Electrical Workers Historical Society, a non-profit that has filed for tax exempt status. Beginning at the \$100 giving level, donors may receive gifts, many of which are customizable and will decorate Founders' Park. Gifts include bricks, paver stones, commemorative plaques and benches, and even museum wings. All donors will receive a certificate of acknowledgement watermarked with an image of the Miller home.

## How to Give\*

- Donate online at [nbew-ibewmuseum.org](http://nbew-ibewmuseum.org). Checks or money orders can be made payable to the Electrical Workers Historical Society: IBEW Local 1, 5850 Elizabeth Ave., St. Louis, Mo., 63110.

\* Please note the Electrical Workers Historical Society will not accept contributions from employers of employees the IBEW represents, seeks to represent or would admit to membership.

## Individual and Local Union Contributions

### Individual Contributions

#### \$100 Donation

Metal cast coin



#### \$500 Donation

Silver cast coin



#### \$250 Donation

Copper cast coin



Local 1 is casting commemorative coins with an image of the boarding house on one side and a hand-drawn National Brotherhood of Electrical Workers fist with lightning bolts on the other.

#### \$1,000 Donation

4" x 8" Personalized & Customized Brick



Have a brick personalized to commemorate your family or local union. The bricks will be located in Founders' Park.



#### \$5,000 Donation

24" x 24" Personalized & Customized Paver

Stone pavers will be placed throughout the courtyard. These stone pavers will stand out, as will your message.

### Premium Contributions

#### \$10,000 Donation

IBEW Fence Emblem



The fence around the property will be a prime spot to show off your local's dedication and support for the history of the IBEW.

#### \$50,000 Donation

NBEW 4' x 4' Stone Emblem or IBEW 4' x 4' Stone Emblem



Your local union may sponsor the NBEW's first hand-drawn emblem or the familiar contemporary IBEW logo.

#### \$75,000 Donation

Founding Fathers Statues on a Pole

There will be 10 resin lineman statues atop poles, representing each of the founding fathers, bordering Founders' Park. Each pole will be identified with a founding father's name and the local union that sponsored it.



THIS POLE AND STATUE REPRESENTS HENRY MILLER ONE OF THE FOUNDING FATHERS OF THE NBEW THIS DISPLAY IS POSSIBLE THANKS TO IBEW LOCAL 1

#### \$25,000 Donation

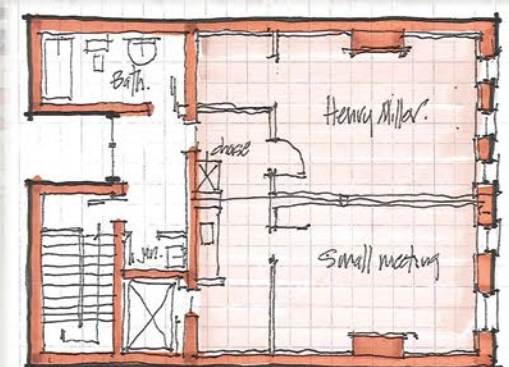
Customized Granite Bench



Local unions may dedicate a granite bench for courtyard visitors.

#### \$100,000 Donation

Museum Floor Sponsor



Local unions can sponsor each of the three floors and will be publicly acknowledged for their generous contributions.